

# Technical data sheet

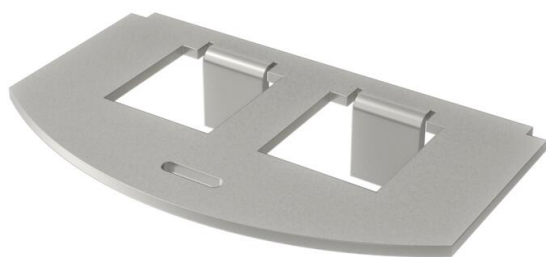
## Mounting plate for data technology, type F

Item number: 7408808



Mounting plate to accept two data connection modules, type Avaya/Systemax: M series.

Dimensions of a mounting opening in mm: 17.40 x 16.60.



**A2** Stainless steel

### Master data

Item number	7408808
Type	MP R2 2F
Description 1	Mounting plate for GES R2
Description 2	for 2x Typ F
Manufacturer	OBO
Material	Stainless steel 1.4301
Smallest sales unit	1
Unit of quantity	Piece
Weight	2.19 kg
Weight unit	kg/100 pc.
CO2 Footprint (GWP) Cradle-to-Gate	0,2058 kg CO2e / 1 Piece

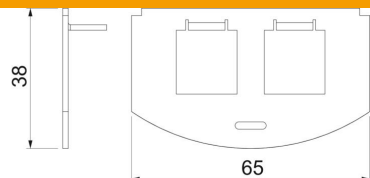
# Technical data sheet

## Mounting plate for data technology, type F

Item number: 7408808



### Dimensions



Length	65 mm
Width	36 mm

### Technical data

Application	Mounting box
Number of CEE/Perilex openings	0
Number of triple openings	0
Number of installable devices	2
Number of single openings	2
Number of oval openings	0
Number of square openings	0
Number of round openings	0
Number of double openings	0
Fastening type	Lockable
Labelling panel	no
Blanking lid	no
Suitable for labelling panel	no
Device type	Data technology
Installation technology	Miscellaneous
suitable for data connection module	Type F