

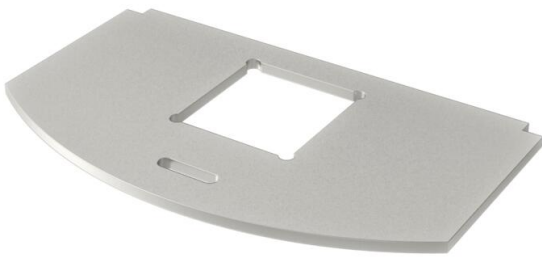
# Technical data sheet

## Mounting plate for data technology, type LE

Item number: 7408810



Mounting support to accept two data connection modules of the following types:  
LexCom 125 and 250.  
Dimensions of a mounting opening in mm: 18.30 x 17.20.

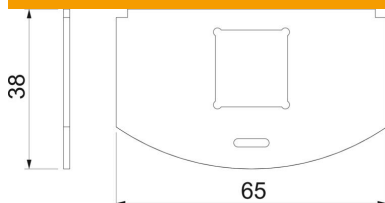


A2 Stainless steel

### Master data

Item number	7408810
Type	MP R2 LE
Description 1	Mounting plate for GES R2
Description 2	for 1x Typ LE
Manufacturer	OBO
Material	Stainless steel 1.4301
Smallest sales unit	1
Unit of quantity	Piece
Weight	2.25 kg
Weight unit	kg/100 pc.
CO2 Footprint (GWP) Cradle-to-Gate	0,2058 kg CO2e / 1 Piece

### Dimensions



Length	65 mm
Width	36 mm

# Technical data sheet

## Mounting plate for data technology, type LE

Item number: 7408810



### Technical data

Application	Mounting box
Number of CEE/Perilex openings	0
Number of triple openings	0
Number of installable devices	1
Number of single openings	1
Number of oval openings	0
Number of square openings	0
Number of round openings	0
Number of double openings	0
Fastening type	Lockable
Labelling panel	no
Blanking lid	no
Suitable for labelling panel	no
Device type	Data technology
Installation technology	Miscellaneous
suitable for data connection module	Type LE